



Dendrocalamus brandisii

Dendrocalamus brandisii also known as **Velvet Leaf Bamboo**, **Teddy Bear Bamboo**, or **Sweet Dragon Bamboo** is one of the largest tropical clumping bamboos in the world. It grows native in Southeast Asia and is often used as a building material.

Summary

Height	19 - 33 m
Diameter	13 - 20 cm
Growth Habit	Dense Clumping
Climate	Tropical - Subtropical
Hardiness	-3°C
Origin	Southeast Asia

Photos





Culms

Dendrocalamus brandisii is a very large evergreen tufted bamboo. Culms have an ashy-gray to greenish-gray color and are on average between 19-33 m high and 13-20 cm diameter.

The thick walled internodes are between 30-38 cm long. Nodes are slightly swollen with rootlets showing on the lowest nodes. Young shoots are dark-gray with a dark-brown blade.

Branches

Many clustered branches with 1 larger dominant branch.

Leaves

The arrow-shaped leaves are between 20-30 cm long and 2.5-5 cm broad, and have minuscule short white hairs covering the leaf surface when young.

Seeds

The species is known to [flower sporadically as well as gregariously](#). Gregarious flowering was last reported in 1987-1988 in Manipur.

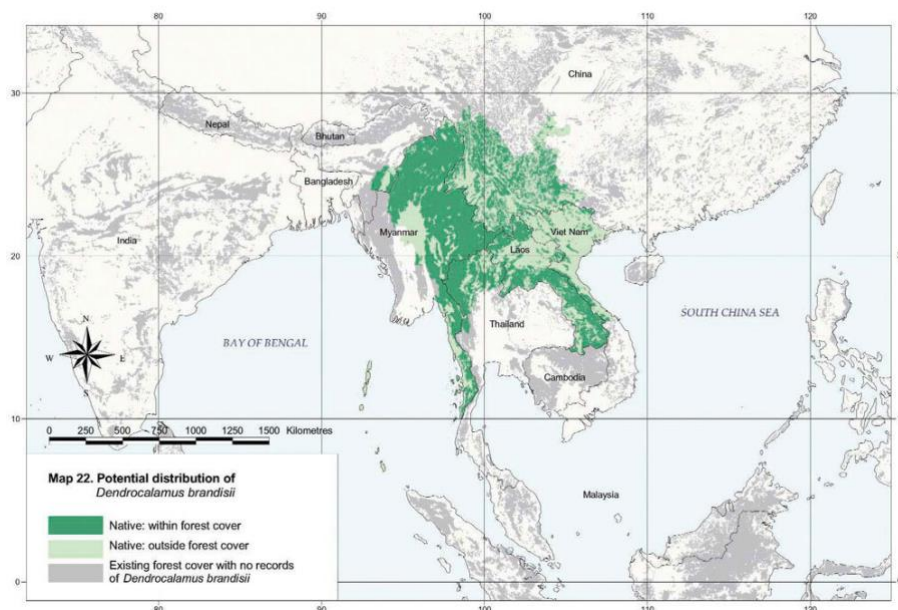
Habitat

Dendrocalamus brandisii grows best in wet evergreen tropical forests up to 1,300 m altitude. This bamboo grows on different soil types but prefer well-drained loamy soil.

Uses

Culms are used for building construction, boat masts, furniture, farm implements, water pots, basketry, handicrafts, paper making. [Shoots are edible](#) and consumed as a vegetable.

Origin



India: north-eastern part (Manipur), and Andaman Islands; **Burma:** from the Kachin hills to Tavoy (Tenasserim) up to 1,200 m altitude; **Thailand:** northern part at 1,000 - 1,300 m altitude; **Laos;** **Vietnam:** Tonkin; **China:** Yunnan at 380 - 1,900 m altitude.

